

Commission Workshop

SFY 2012-13 Agency Budget

Agency Budget – Base Dollars

Legislative Update:

- House has concluded debate
- State budget debate is underway in the Senate
- \$8.7M restored to transit budget

Agency Budget – Provisos

Legislative Update:

- Proposed establishing a Joint Transportation Corridor Committee to study interstate corridors and report findings to various political bodies by end of this year; requires Governor to report findings in her State of State and/or Executive Budget
- House proposed 2% Salary Increase → \$4.2 M annually
- Senate potential 3% Salary Increase → \$6.3 M annually
- 1% employer contribution on retirement → \$1.8 M annually
- 4.6% employer contribution on health insurance → \$975 k annually

**Without
Accompanying
General Funds**

\$ 7 – 9 M Fiscal Impact

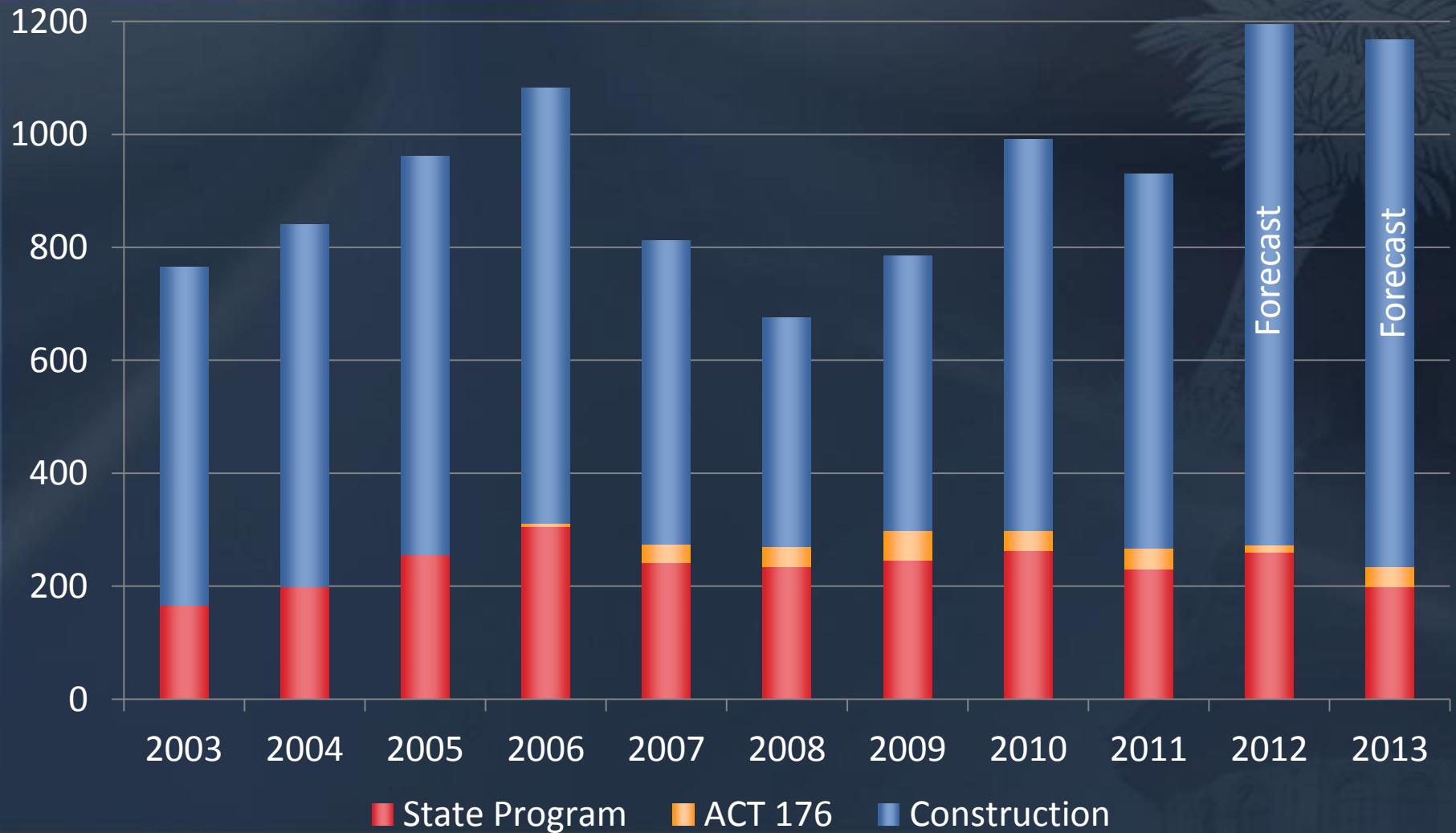
Agency Budget

Supported Primarily by:

- State Motor Fuel Revenues $\approx 1/3$
- Federal-Aid Program Reimbursements $\approx 2/3$

Expenditure Trends SFY 2003-2013

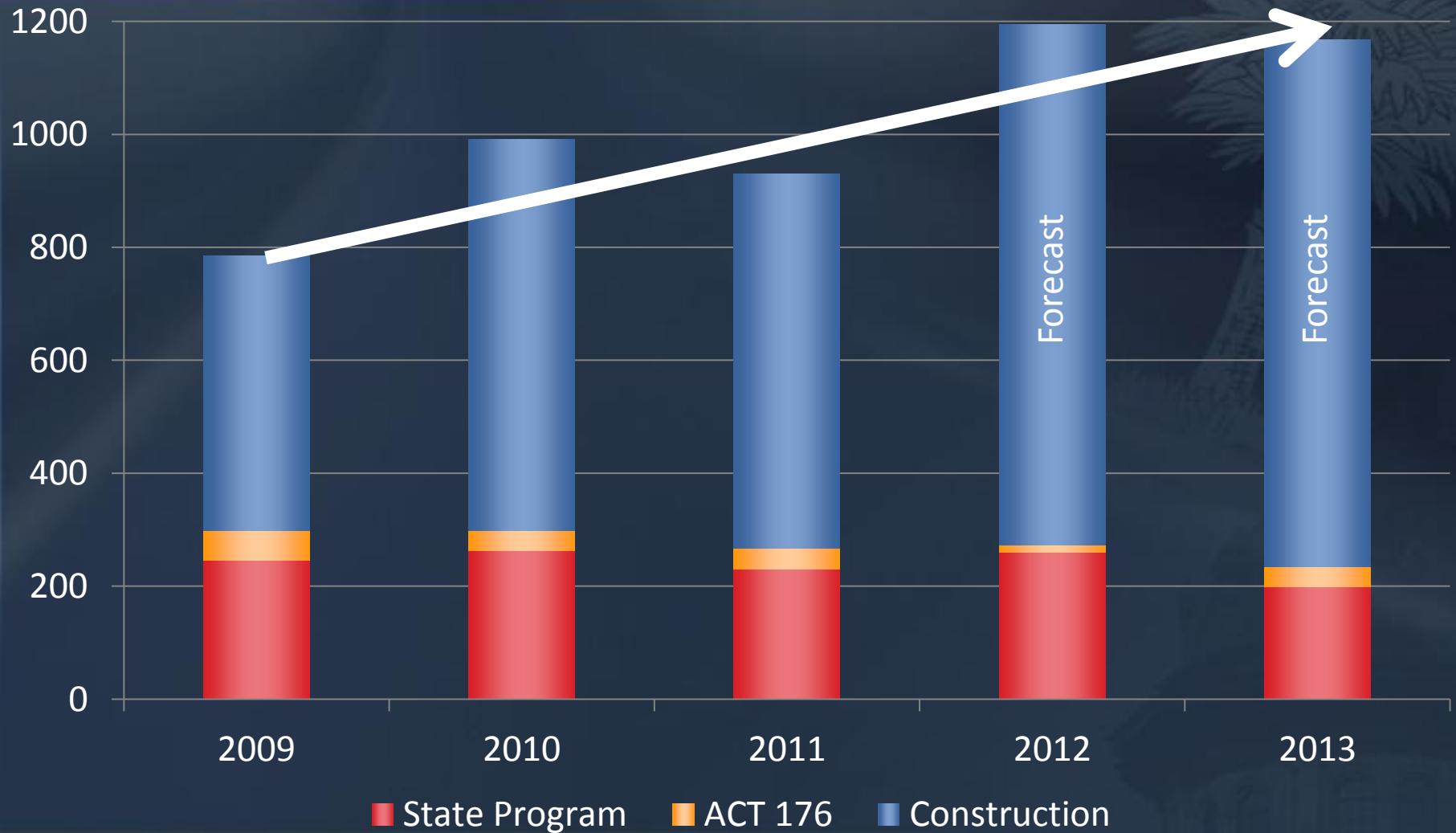
Based on CG Reports including Month 13 adjustments



State Program ACT 176 Construction

Expenditure Trends SFY 2009-2013

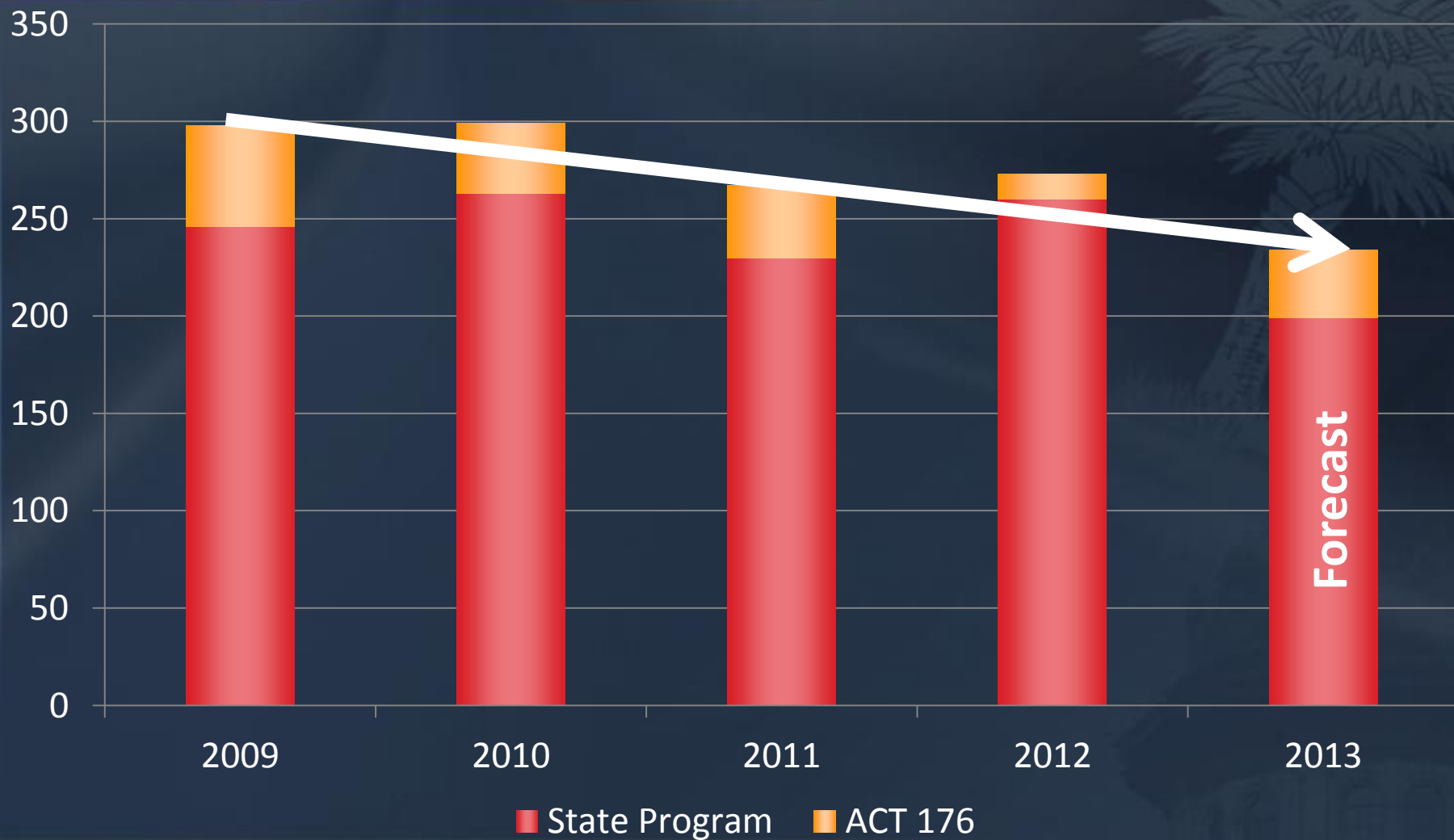
Based on CG Reports including Month 13 adjustments



State Program ACT 176 Construction

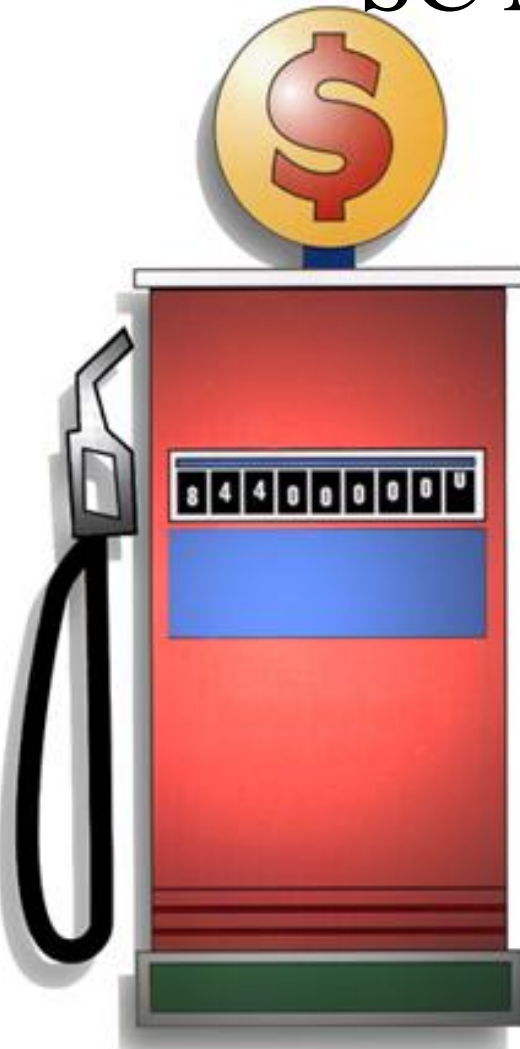
State Program Expenditure Trends

SFY 2009 - 2013



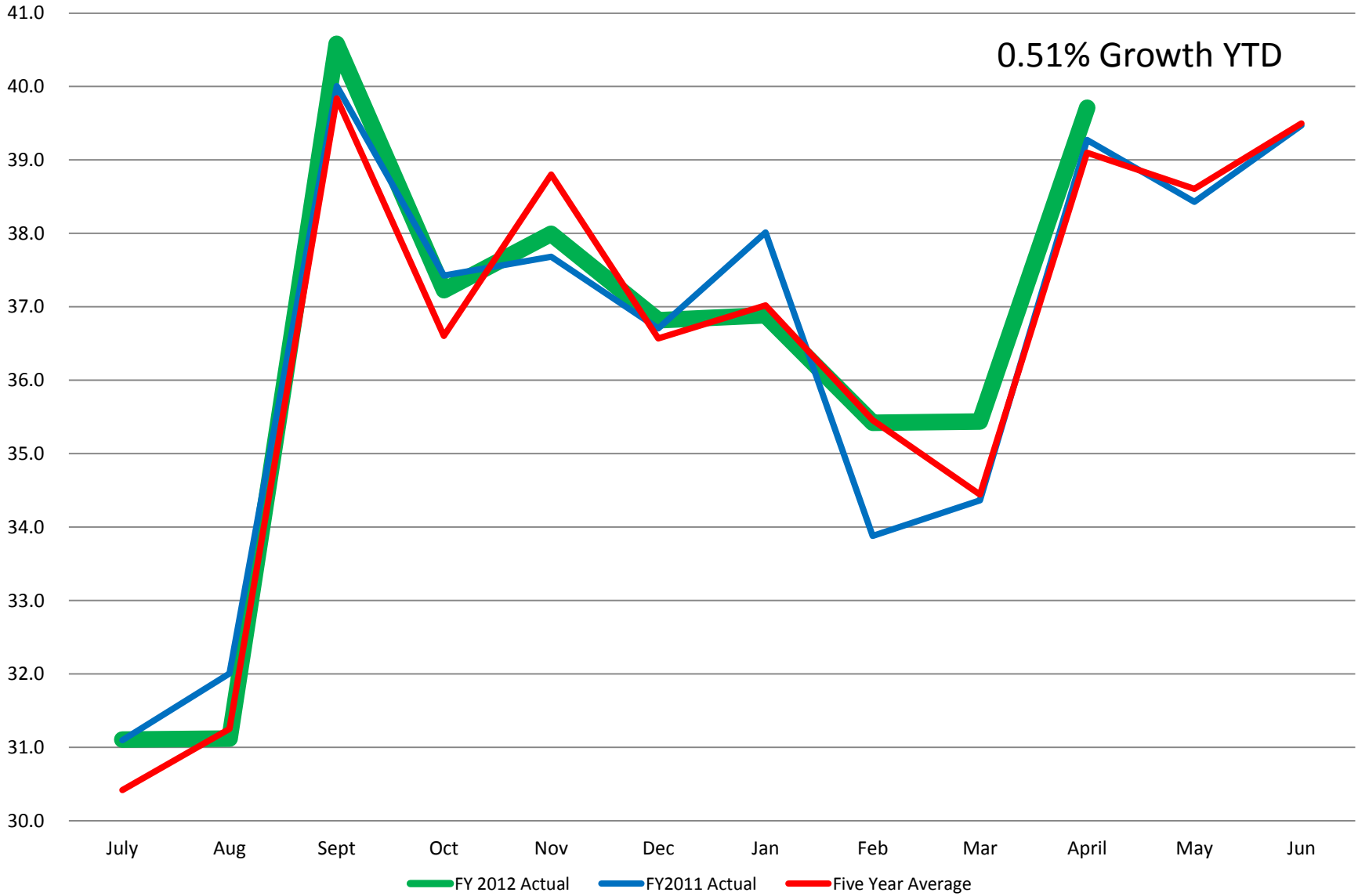
SC Motor Fuel User Fee

State Fiscal Year 2012-2013



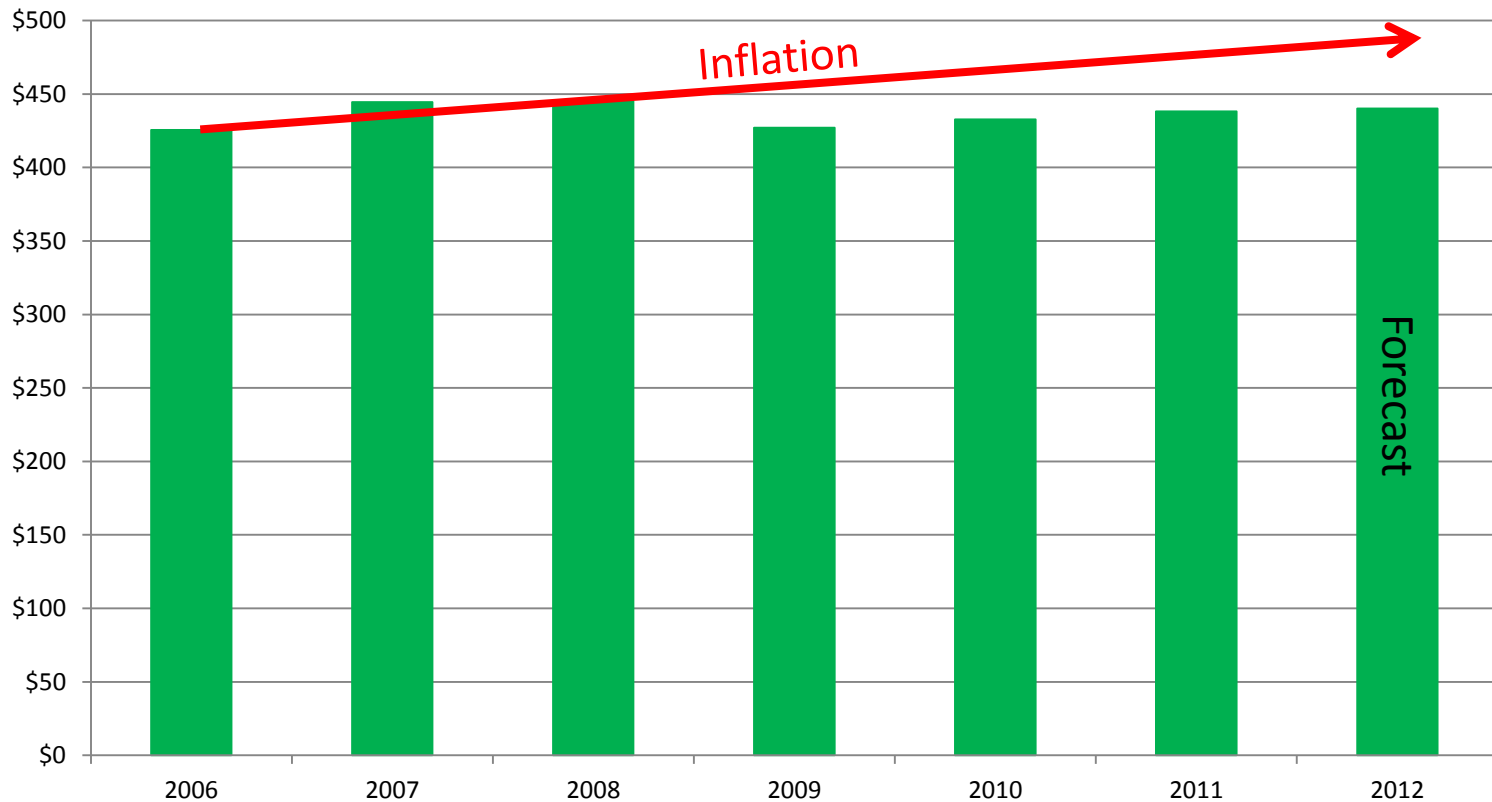
Motor Fuel User Fee (Diesel & Gas) 16¢ per gallon		\$520,300,000
Gas User Fee to County Transportation Fund 2.66¢ per gallon	(\$ 69,000,000)	
Watercraft Fund to Department of Natural Resources	(\$ 3,300,000)	
Total From Highway Fund		<u>(\$ 72,300,000)</u>
Remaining for DOT Operations		<u>\$448,000,000</u>

Monthly State Motor Fuel Revenues



State Motor Fuel Revenues

SFY 2006-2012



SFY 12-13 Revenue Projections

REVENUES (in millions)

\$ 815.2 Federal Reimbursements

\$ 448.0 Motor Fuel User Fee

4.0 Interest

8.0 Toll Revenues

44.6 Maintenance Trust Fund

52.4 Misc. (Permits, Sale of Property & other)

2.8 Interagency Transfers

(12.3) CTC Donor County Transfer/SIB Transfer

(63.9) Debt Service (DOT & Toll)

\$ 483.6 Remaining State Revenues

SFY 12-13 State Revenue Utilization

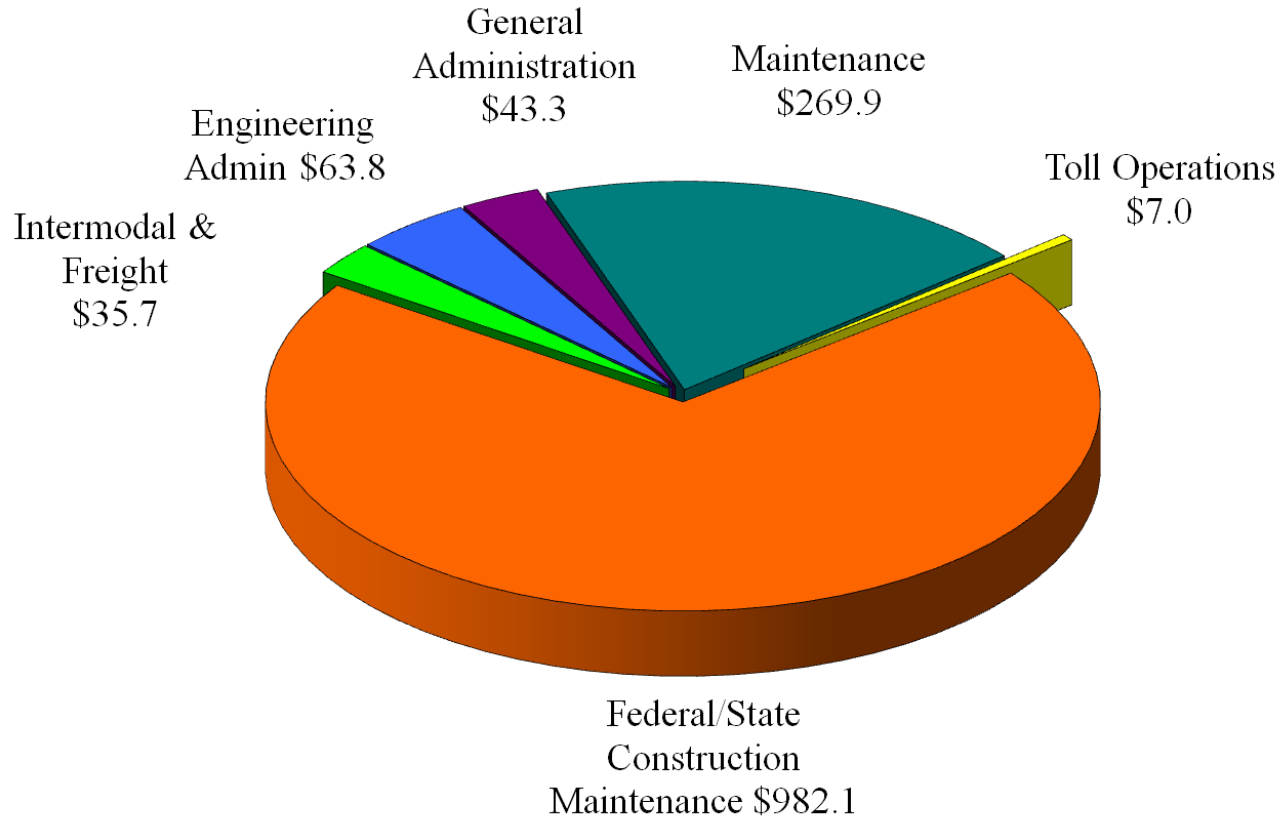
BUDGET FRAMEWORK (in millions)

\$ 483.6	Projected Remaining State Revenues	
(42.2)	General Administration	
(1.0)	Land & Building	
(3.1)	Tolls	
<u>(167.4)</u>	<u>Reqd State Match for Projected Federal Aid Program</u>	
\$ 269.9	Balance Remaining for State Program	

Based on
Cash Flow
Model
Forecast



Breakdown of FY12-13 Budget Total \$1,401.8 M



The background of the slide features a dark blue gradient. On the right side, there is a faint, light-colored illustration of a graduation cap (mortarboard) at the top, with several palm trees below it. The text is centered in a bold, yellow, serif font.

Commission Workshop

SFY 2012-13 Agency Budget