

# Cash Management Update

## SCDOT Commission Workshop

*January 18, 2012*



# Current Cash Status

- Approximately \$60 M in supplier, contractor & consultant payments sent to the Comptroller General thus far in January
- Cash balance as of January 18 = \$38.8 Million
  - \$2 Million AP Payments at the CG's Office being processed
  - \$5 Million Remaining Recurring Monthly Expenses and Debt Service
  - \$14 Million Additional Planned AP payments
- Additional Federal Reimbursement expected Jan 23 = \$34 Million
  - \$21 Million Additional January Planned AP payments
- SCTIB payments are current
- Next Receipt of State Motor Fuel Revenues Feb 7 = \$38 Million (estimated)



# Accounts Payable Report as of Jan 17, 2012

	# of Invoices	% of Invoices	Value	% of TOTAL Value
Construction Contractor Estimates	183	17%	\$ 47,065,306	88%
Purchase Orders	599	56%	\$ 3,543,822	7%
Other (ROW Acquisitions, Claims, Travel, Utilities, etc)	288	27%	\$ 2,806,020	5%
Consultant Agreements	8	1%	\$ 283,593	1%
<b>TOTAL</b>	<b>1078</b>		<b>\$ 53,698,741</b>	

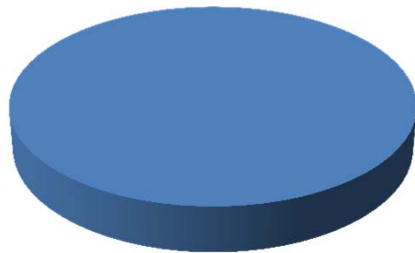
\*Interdepartmental Transfers are excluded.



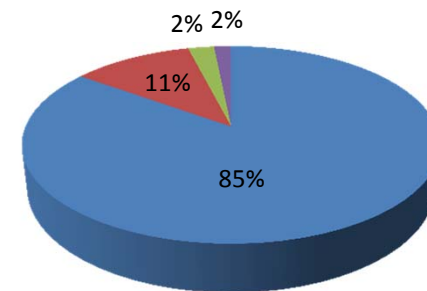
# Aging Report as of Jan 17, 2012

Based on 30 Business Day Requirement

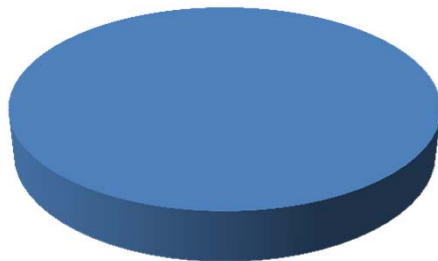
**Construction Contractors**  
**\$47.1 M (183 items)**



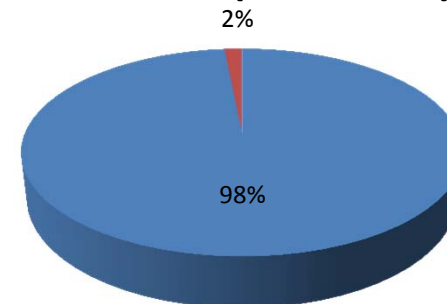
**Purchase Orders**  
**\$3.5 M (599 items)**



**Consultants**  
**\$0.3 M (8 items)**



**Other**  
**\$2.8 M (288 items)**

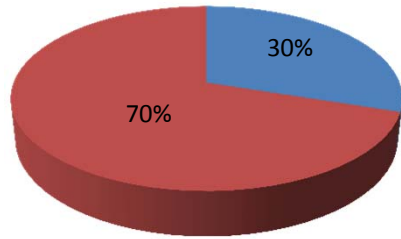


- 1-30 Business days
- 31-45 days
- 46-60 days
- greater than 60

# Aging Report as of Jan 17, 2012

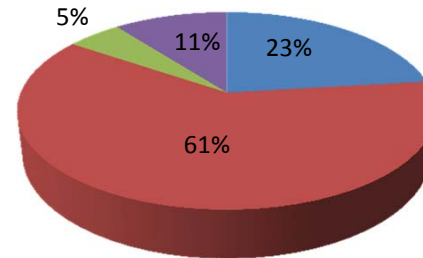
Based on 30 Calendar Day Goal

**Construction Contractors**  
**\$47.1 M (183 items)**

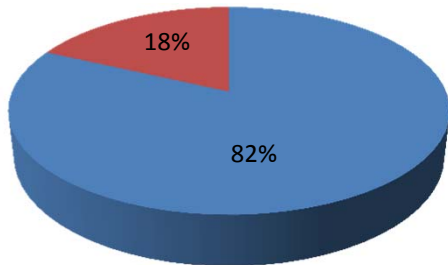


- 1-30 Calendar days
- 31-45 days
- 46-60 days
- greater than 60

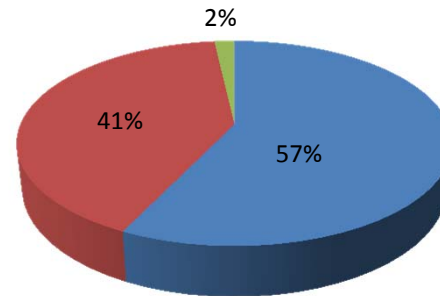
**Purchase Orders**  
**\$3.5 M (599 items)**



**Consultants**  
**\$0.3 M (8 items)**



**Other/Utilities**  
**\$2.8 M (288 items)**



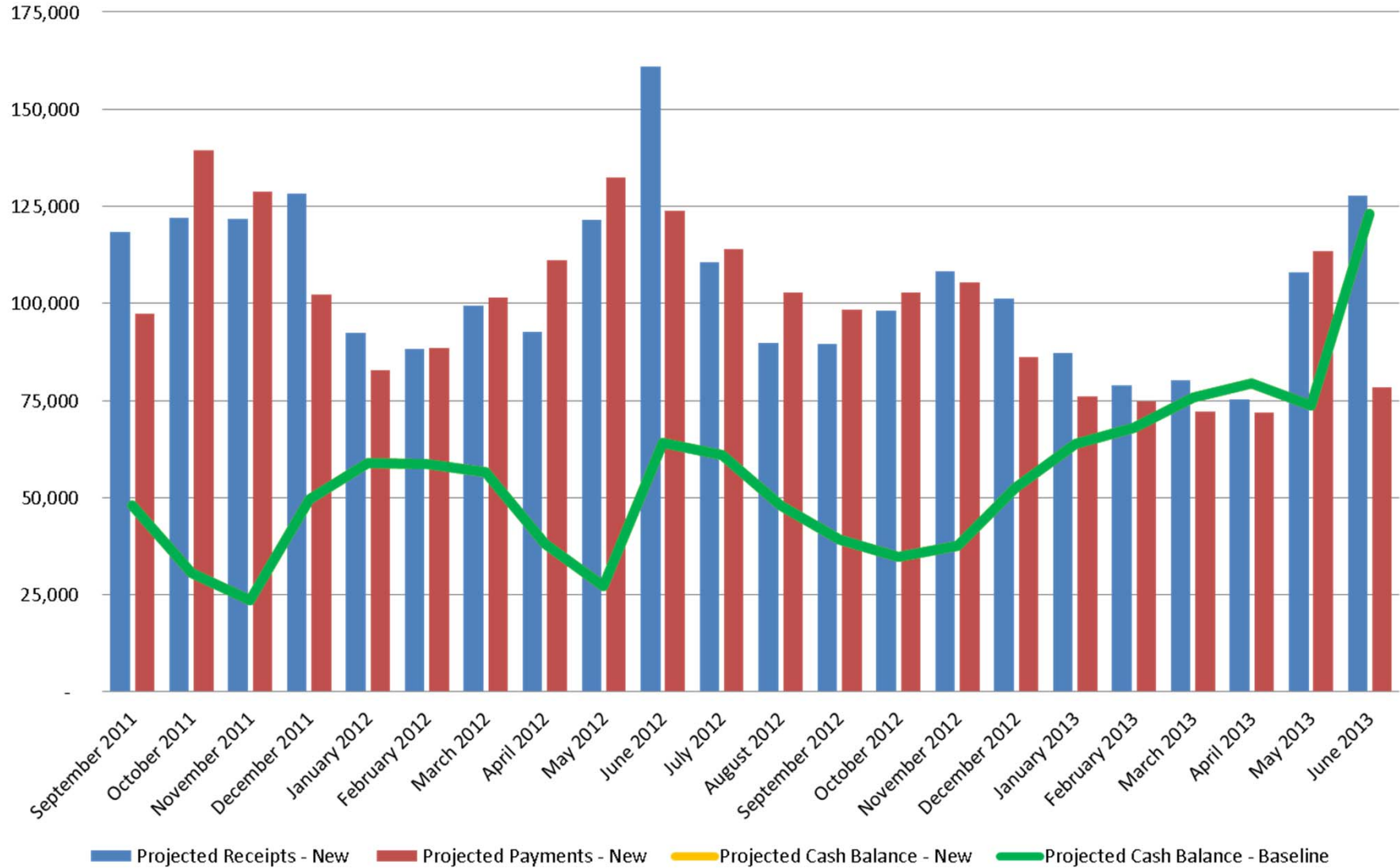
# Project and Resource Analysis Meeting (PRAM)

- Continues to meet once a week
  
- Current Items being reviewed:
  - Re-establishing a 12-18 month Tentative Letting List
  - Evaluating Maintenance Operating Budget for SFY 12-13 and remaining current SFY
  - Analyzing specific payout schedules for LPA Administered projects
  - Analyzing effect of rising fuel costs on existing projects
  
- Analyzing future FY relative to ability to achieve full drawdown of all available Federal funds given current State funding levels.

# SCDOT Projected Cash Receipts, Payments & Balance

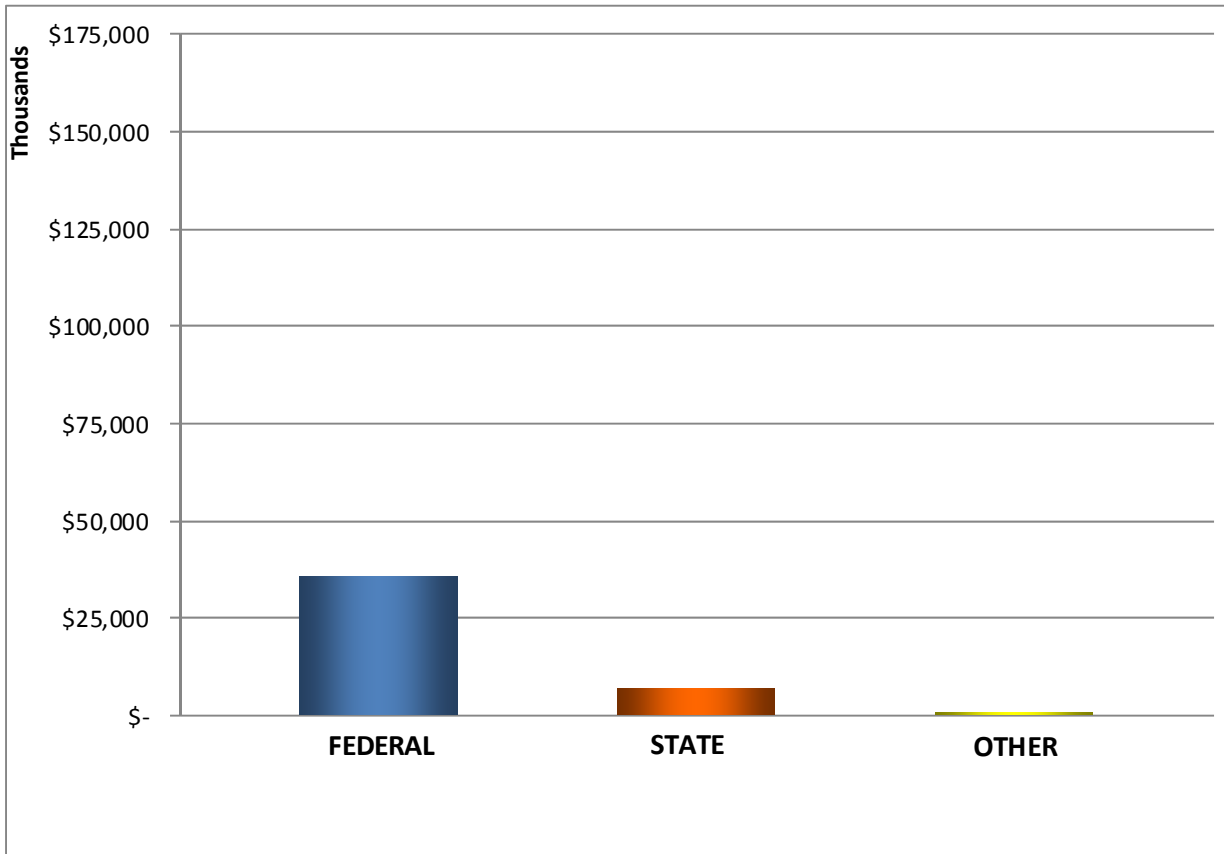
## January 10, 2012

New Baseline thru May 2012 Letting

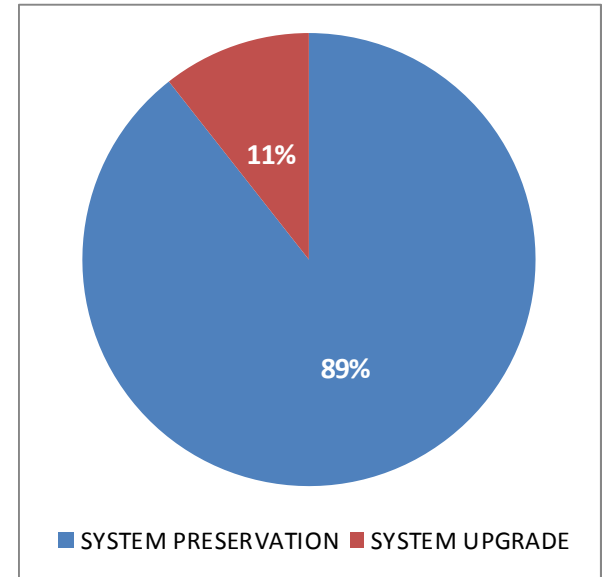


# APRIL 10, 2012 LETTING SUMMARY

LETTING	# of CONTRACTS	FEDERAL	STATE	OTHER	ESTIMATED TOTAL
April 2012	26	\$ 35,399,810.30	\$ 6,939,727.50	\$ 580,792.70	\$ 42,920,330.50



VALUE OF CONTRACTS BY ACTIVITY TYPE



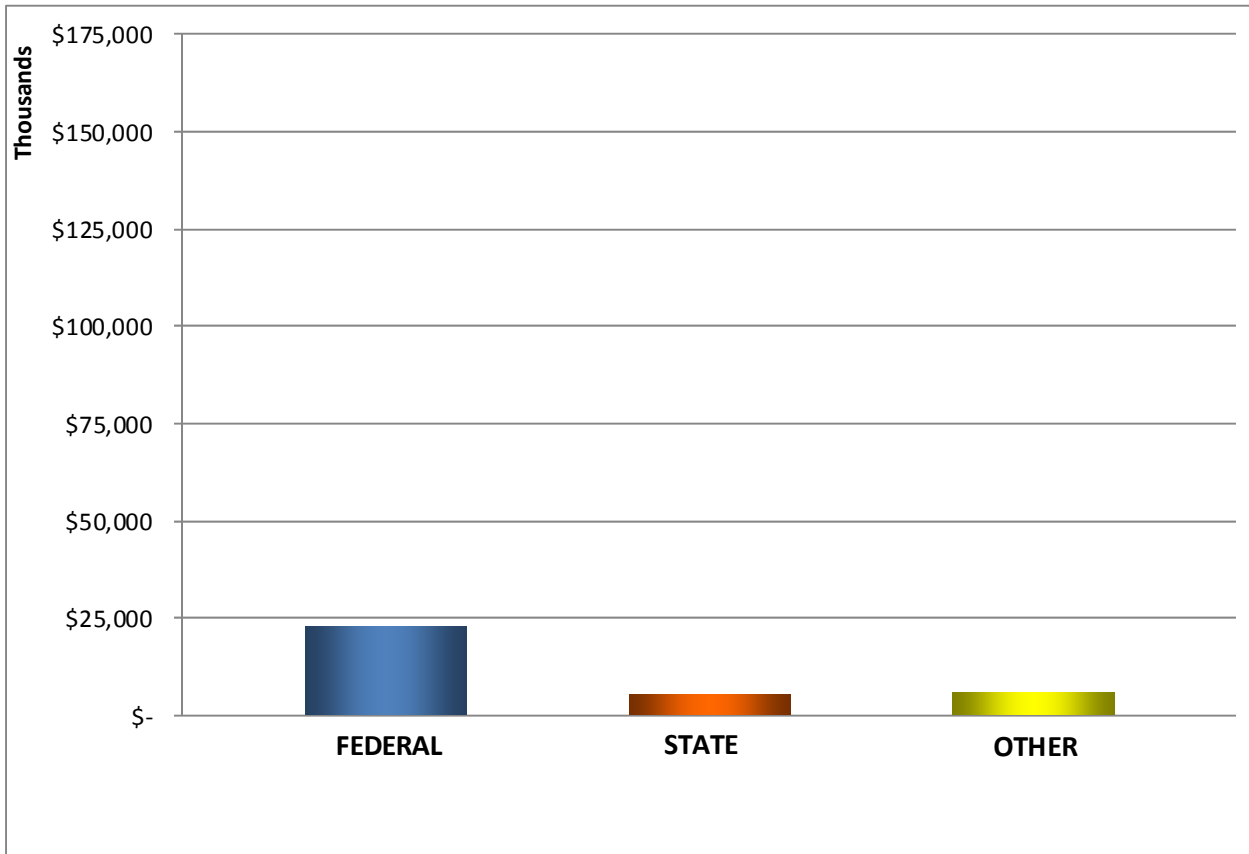
STATEWIDE DISTRIBUTION OF CONTRACTS

Engineering District 1	3
Engineering District 2	0
Engineering District 3	2
Engineering District 4	2
Engineering District 5	5
Engineering District 6	8
Engineering District 7	6

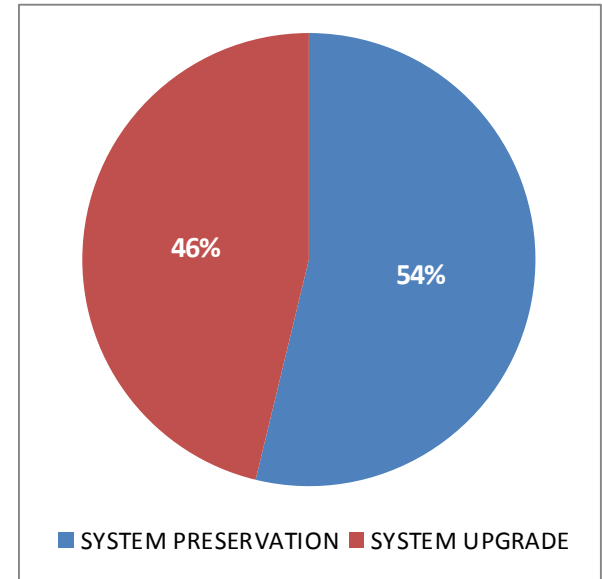


# MAY 8, 2012 LETTING SUMMARY

LETTING	# of CONTRACTS	FEDERAL	STATE	OTHER	ESTIMATED TOTAL
May 2012	16	\$ 22,903,262.10	\$ 5,086,665.52	\$ 5,972,855.70	\$ 33,962,783.32



VALUE OF CONTRACTS BY ACTIVITY TYPE



STATEWIDE DISTRIBUTION OF CONTRACTS

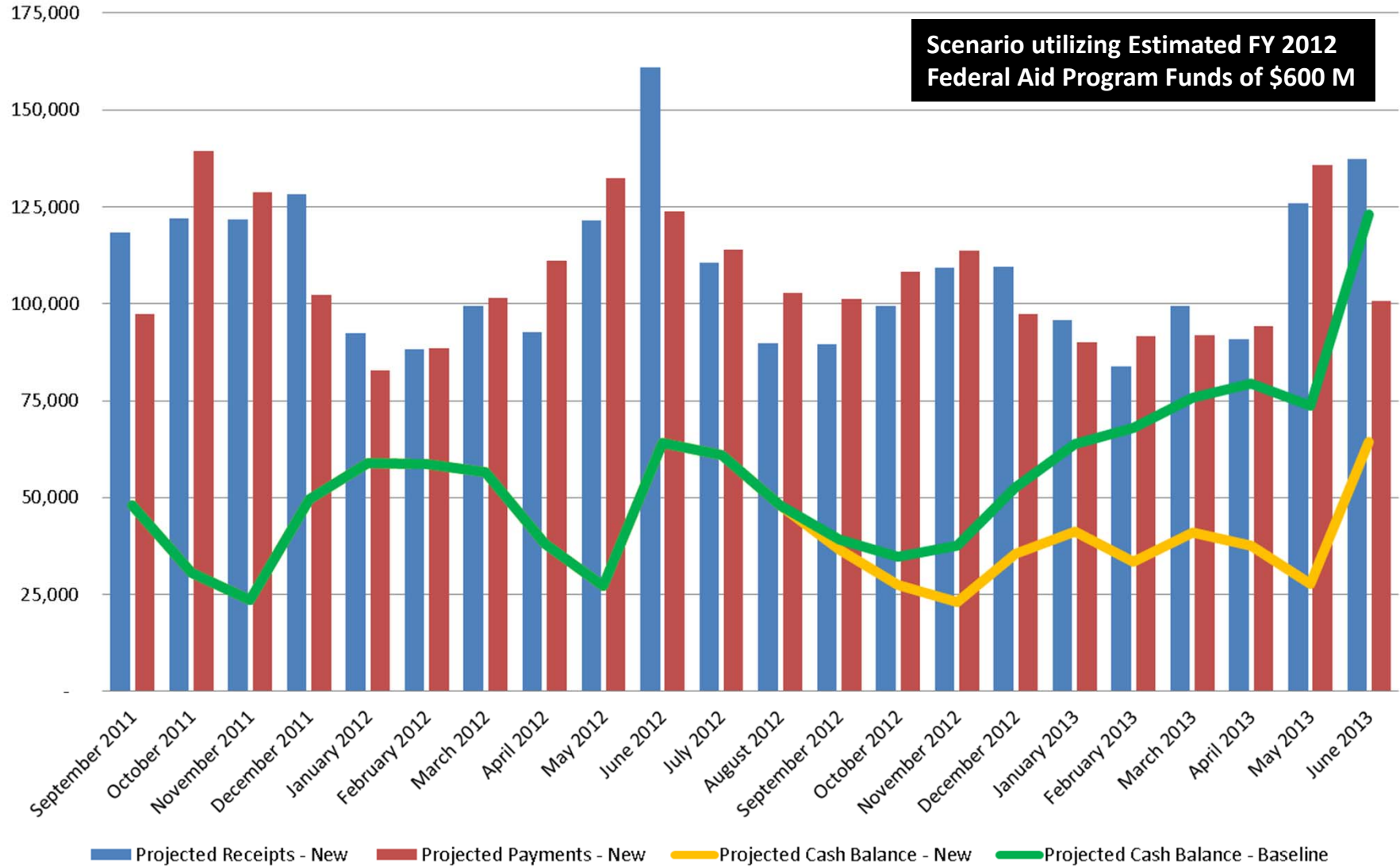
Engineering District 1	3
Engineering District 2	1
Engineering District 3	2
Engineering District 4	3
Engineering District 5	6
Engineering District 6	0
Engineering District 7	1

# SCDOT Projected Cash Receipts, Payments & Balance

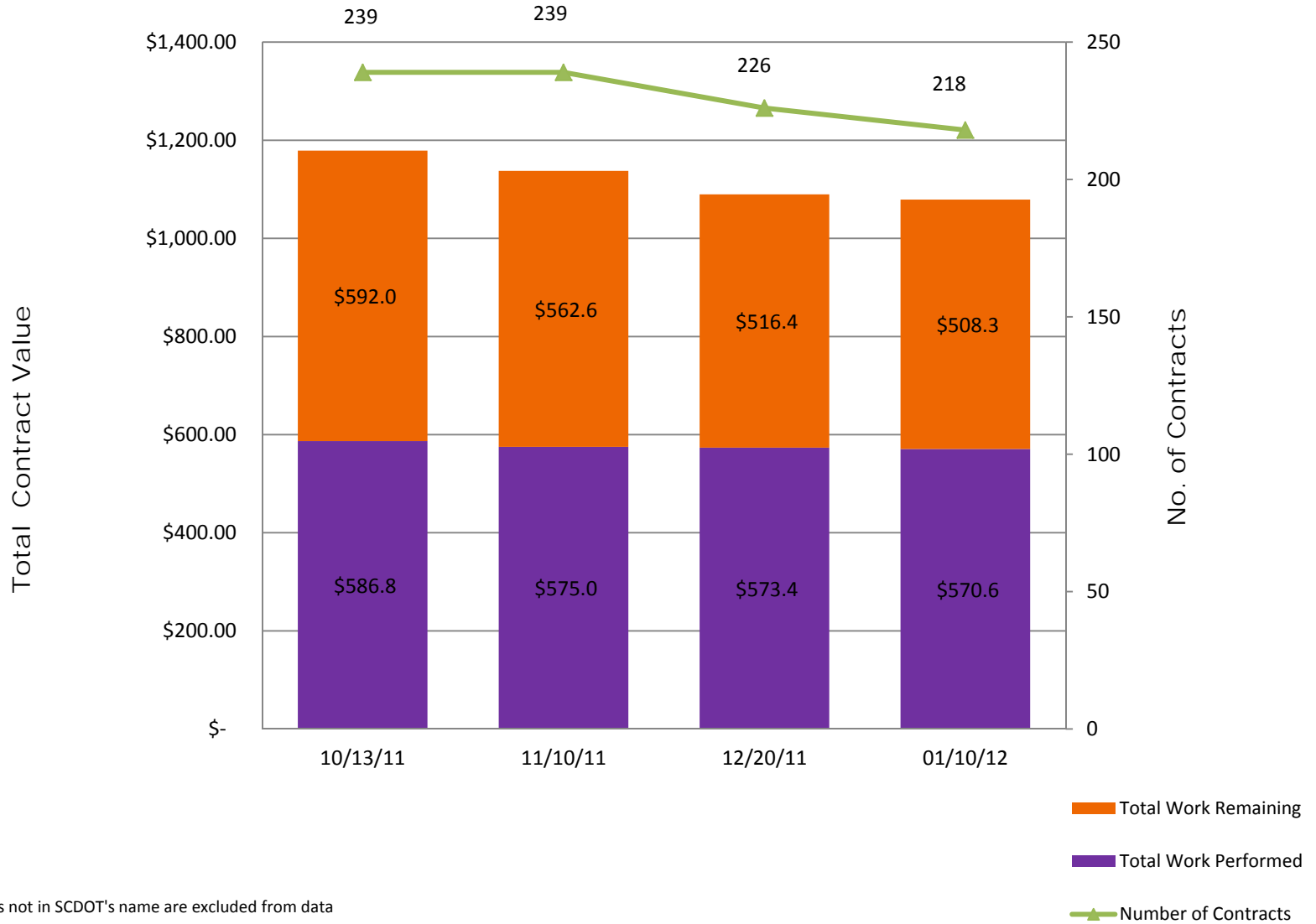
## January 10, 2012

New Baseline thru May 2012 Lettings

Scenario utilizing Estimated FY 2012 Federal Aid Program Funds of \$600 M



## Summary of Construction Contracts in Force



Contracts not in SCDOT's name are excluded from data

