



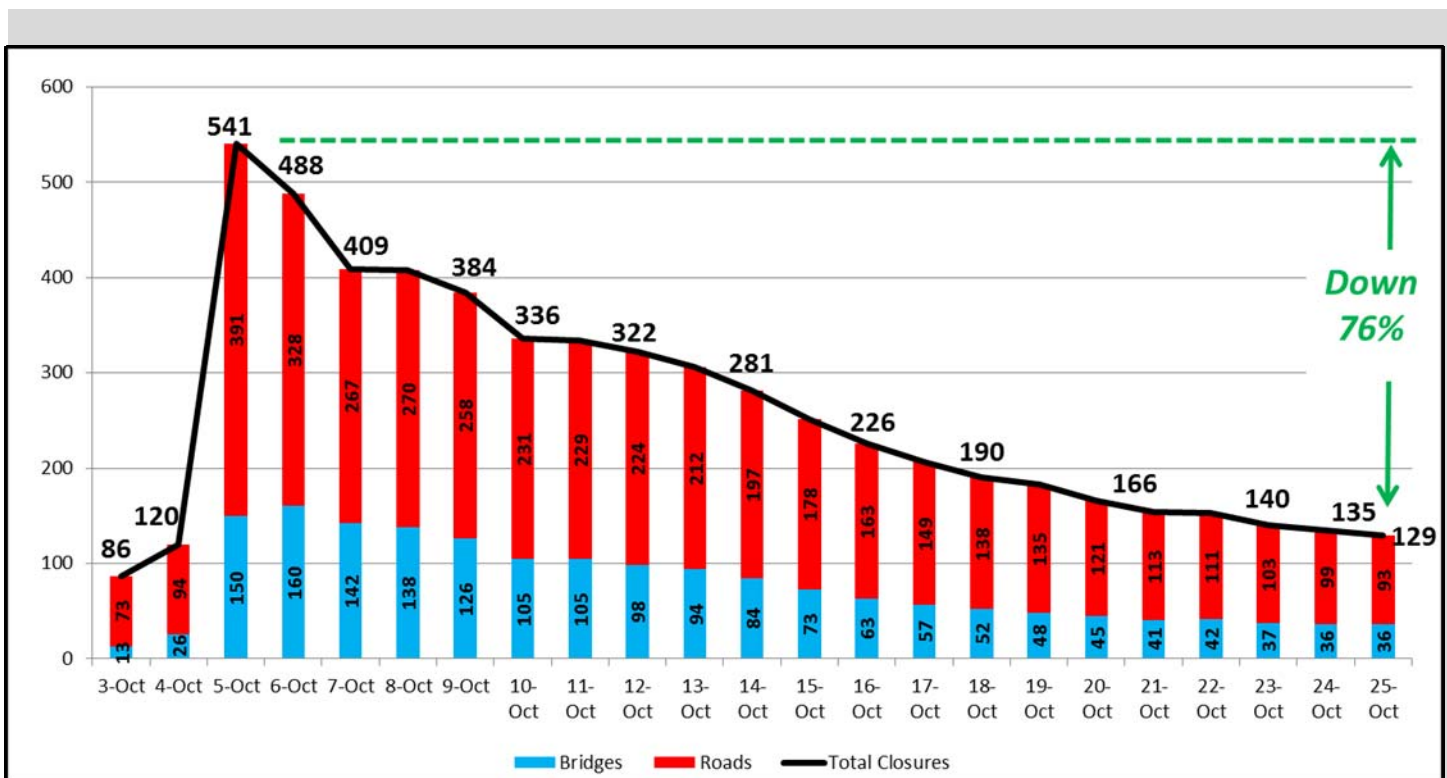
# Infrastructure Recovery Daily Report

Sunday, October 25, 2015

## Resources Currently Deployed on Recovery Operations

- ◇ Recovery efforts are staffed at approximately 67 Crews or over 425 Highway Workers.
- ◇ 21 Highway/Bridge Contractors have been engaged to assist with 62 different “emergency/spot repairs” in 13 counties. 20 of the firms are SC firms, 1 GA firm. 3 of the firms are DBEs.
- ◇ 6 Debris Removal Contractors have been engaged. 2 are SC firms. 15 Debris Collections Trucks & Trailers are operating.
- ◇ SCDOT Call Center is operating 6 am—7pm daily. There have been over 3.5 Million visits to the SCDOT Road Conditions webpage during this event.

## Closures on the State-Maintained System



All Interstates are OPEN.

12 Primary Routes remain CLOSED statewide. Richland: US 21, US 321, SC 48 & SC 769. Clarendon: US 15, US 301 & US 521 (partial). Orangeburg: SC 6. Newberry: US 176. Florence: SC 51. Sumter: US 76 Business (partial). Williamsburg: SC 512.

Majority of the current closures are on the Secondary System. Priority is placed on high volume Secondaries, routes around schools, fire departments and other critical access areas.



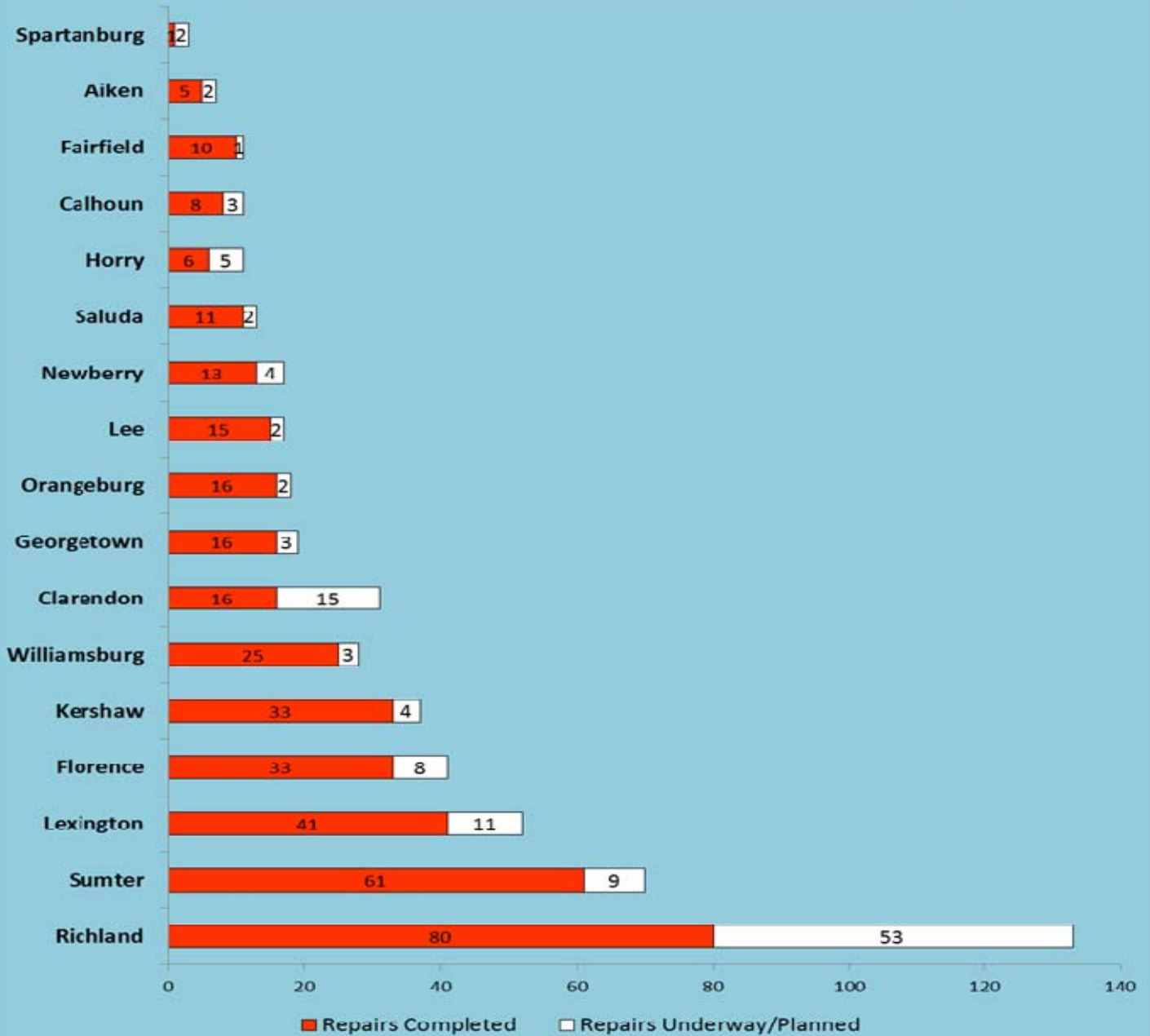
# Infrastructure Recovery Daily Report

Sunday, October 25, 2015

All repairs to the state-maintained system have been completed in 13 Counties to date:

Abbeville County, Allendale County, Anderson County, Bamberg County, Berkeley County, Charleston County, Colleton County, Darlington County, Dorchester County, Greenwood County, Laurens County,

## Repair Status for State-Maintained Road & Bridges



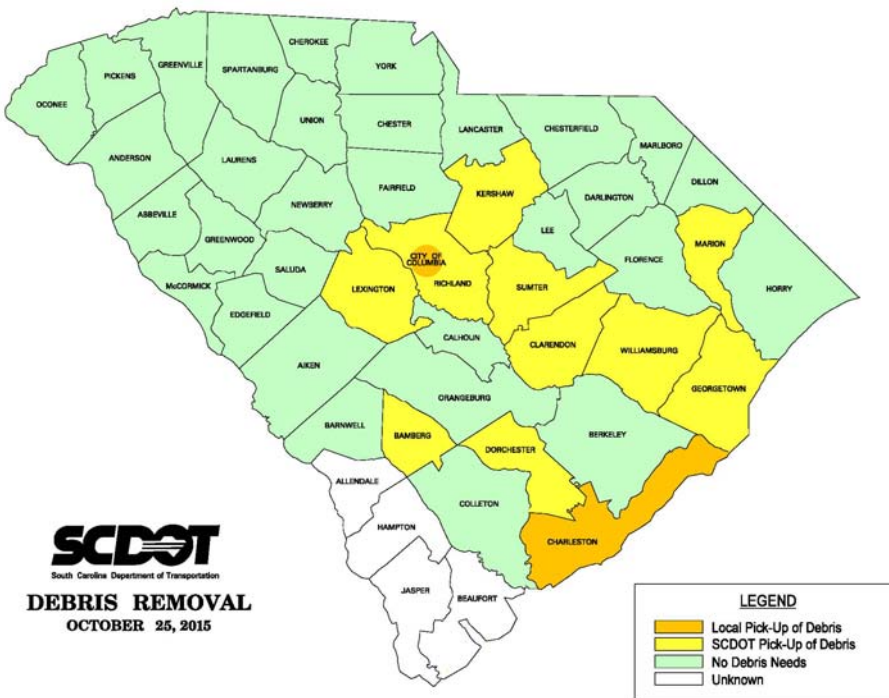
Please visit us at [www.scdot.org](http://www.scdot.org) / Storm Resources in order to get an up-to-date listing of road closures and anticipated repair schedules by County. Updates are also provided on Facebook & Twitter.

## Other Modes of Transportation



- ◇ **Transit operations have returned to NORMAL OPERATIONS with 2 exceptions:**
  - ◇ Central Midlands RTA (Comet) has detours on Route 47 (Eastover) and Route 88 (Garner's Ferry to Broad River)
- ◇ **Airports, Ports, Passenger Rail and Short-Line Rail are all operating NORMALLY.**
- ◇ **Norfolk Southern:** Columbia-to-Spartanburg Line (W line) is projected to be out of service until the week of Nov 9 due to bridge repairs. Traffic is being rerouted to accommodate local service with minor delays expected.
- ◇ **CSX:** Eastover Subdivision (Columbia, SC to Orangeburg, SC) is now open but has delayed service. CSX estimates 4-5 weeks until full repairs are completed.

## Debris Removal Operations



**Collected to Date: approx. 734 loads**  
(36,437 CY)

**Over the next 2 days, SCDOT Debris Removal Contractors will be working in:**

- ◇ **Berkeley County** College Park Estates on Columbia Road and Oxford Road in the Town of Ladson;
- ◇ **Dorchester County** in the Ashborough, Summerwood, and Tranquil Estates subdivisions;
- ◇ **Georgetown County** Town of Andrews on Candelwood Road, Cherokee Road, Comanche Road, and Gapway Road; **and**
- ◇ **Richland County** in the Arcadia Lakes, Congaree Church, and Forest Acres areas.

**SCDOT is leading Debris Removal in 10 Counties and 7 Municipalities : Bamberg, Clarendon, Dorchester, Georgetown, Kershaw, Lexington, Marion, Richland, Sumter and Williamsburg plus the City of Sumter, Town of Summerville, City of Denmark, Town of Kingstree, Town of Andrews, City of Georgetown and Town of Hemingway.**

**Charleston County and the City of Columbia are leading the Debris Removal efforts within their respective areas.**

**Red text indicates agreements being finalized.**



## Requested Assistance

Request continued assistance messaging that communities should continue to bring the storm-related debris to the roadside and sort it into the 6 categories.

### Separating Your Debris

Debris should be placed curbside, without blocking the roadway or storm drains.

**NO PICKUP ZONE**  
Any debris placed from the sidewalk toward your property will not be picked up.

**DEBRIS SEPARATION**  
Separate debris into the six categories shown below.

**DO NOT STACK OR LEAN**  
Placing debris near or on trees, poles, or other structures makes removal difficult. This includes fire hydrants and meters.

**UNSURE WHERE TO PLACE DEBRIS?**  
If you don't have a sidewalk, ditch, or utility line in front of your house, place debris at the edge of your property before the curb.

**Normal Household Trash**  
Normal household trash and bagged debris of any kind will not be picked up with disaster debris. You should continue to follow your normal garbage removal schedule.

**VEGETATIVE DEBRIS**

- Leaves (do not put in bags)
- Logs
- Plants
- Tree branches

**CONSTRUCTION & DEMOLITION DEBRIS**

- Building materials
- Carpet
- Drywall
- Furniture
- Lumber
- Mattresses
- Plumbing

**APPLIANCES & WHITE GOODS**

- Air conditioners
- Dishwashers
- Freezers
- Refrigerators
- Stoves
- Washers, dryers
- Water heaters

**ELECTRONICS**

- Computers
- Radios
- Stereos
- Televisions
- Other devices with a cord

**HOUSEHOLD HAZARDOUS WASTE**

- Cleaning supplies
- Batteries
- Lawn chemicals
- Oils
- Oil-based paints and stains
- Pesticides